

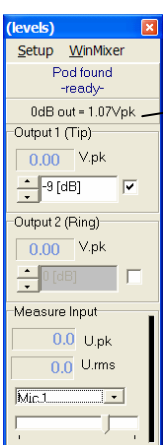
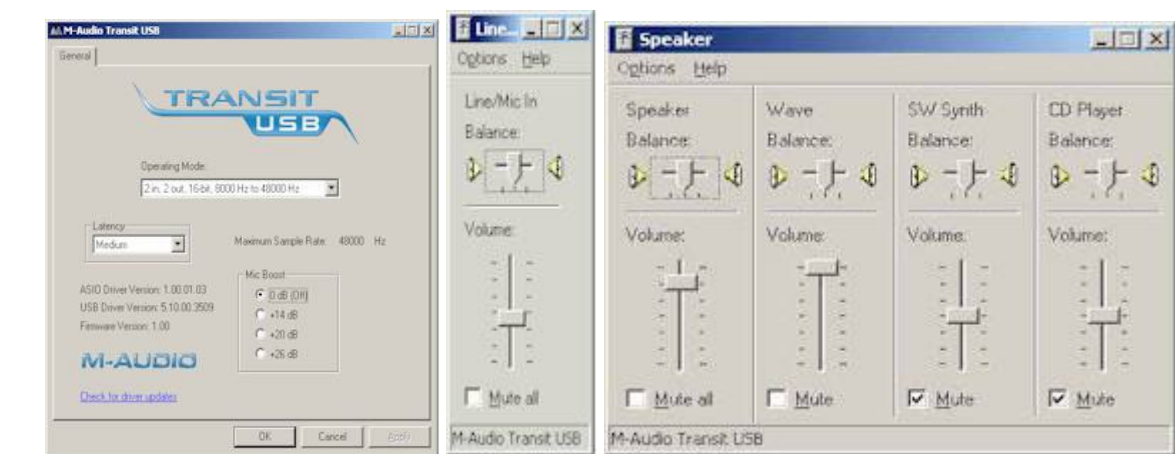
M-Audio Transit USB

Setup notes

IMPORTANT! BEFORE INSTALLING THE TRANSIT USB, please verify that your system has been updated to Microsoft DirectX version 9 (or latest version). Otherwise installation of the card could hang the Windows operating system!

- For notebook systems: Make sure that ALL Power management are DISABLED (see your Windows Control Panel "Power Options"). You cannot get good audio operation if Windows is trying to back the system down to save on power.
- Install the TRANSIT as directed in its instructions. It is recommend downloading only the driver from the webpage for installation. The CD provided will install unnecessary mixing software. If you are using the Transit for products other than Praxis and need the mixing software, install from the CD. (Latest driver is available from the M-Audio website) www.m-audio.com. If you have a choice, connect the TRANSIT directly to a USB port on the computer (rather than through an expansion hub). **Replace the white 6' USB** cable supplied by M-Audio with the shorter 3' supplied by Liberty Instruments. If the TRANSIT was not purchased by Liberty Instruments, you can purchase a 3' cable at your local electronics store. If your computer contains more than one USB port, connect the TRANSIT to each port to install the drivers to each port. Windows treats each USB port individually. This will insure that all USB ports work in future use.
- Use short (12 inches or under) mini-phone stereo cables for connection from the Transit to the AudPod. Long cables in this application can be susceptible to inductive noise pickup.
- Connect the "line/optical<" connector of the Transit to the "To Sound Line In" jack of the AudPod.
- Connect the "line>" connector of the transit to the "From Sound Line Out" jack of the AudPod.
- Connect the AudPod to a USB connector of the computer (the AudPod can be connected via a USB hub, if more USB ports are needed). Then Start PRAXIS.
- Be sure to select the "M-Audio Transit USB" device in the Setup menu of Praxis' "(levels) Form".
- Perform the steps described in "**Getting Started With Praxis**". This sheet can also be found at http://www.libinst.com/praxis_downloads.htm In step (9), use the "WAVE_EXT" menu in its checked state.

This is a very clean, no-nonsense device. Calibration should proceed smoothly. **When selecting usable sampling rates during calibration, only select up to 48kHz (not 96kHz).**



0dB out=1.07Vpk

If the calibration is completed properly, you should get approximately "0dB out=1.07Vpk" in the Praxis (levels) form. If you have more than .05Vpk difference, recheck calibration.